



Browser Documentation

Version 01
22.07.2013
Daniel Boschofsky

1. updated edition

All rights reserved: POOL4TOOL AG, Vienna, July 2013

Editor: Daniel Boschofsky

Address: Altmannsdorfer Straße 91/19
1120 Vienna, Austria

Email: daniel.boschofsky@pool4tool.com

This document and any attachments are the property of POOL4TOOL and are intended solely for the named recipients or entity to whom it is addressed. In particular, the content must neither be made accessible to any third parties outside the company without the consent of POOL4TOOL, nor must it be copied, and/or used in whole or in part for any purpose other than the internal information.

Contents

Contents.....	1
1. Preface.....	4
2. Systemrequirements	5
3. Browsersettings for Internet Explorer 9.0	6
3.1 Trusted sites	6
3.2 Internet Settings.....	7
3.3 Advanced Settings.....	8

1. Preface

This document describes the minimum hardware requirements and ideal IE 9 settings for accessing POOL4TOOL. These settings are a working example for IE9. Settings for IE7, 8 and 10 are similar except for the optical appearance of the settings tabs.

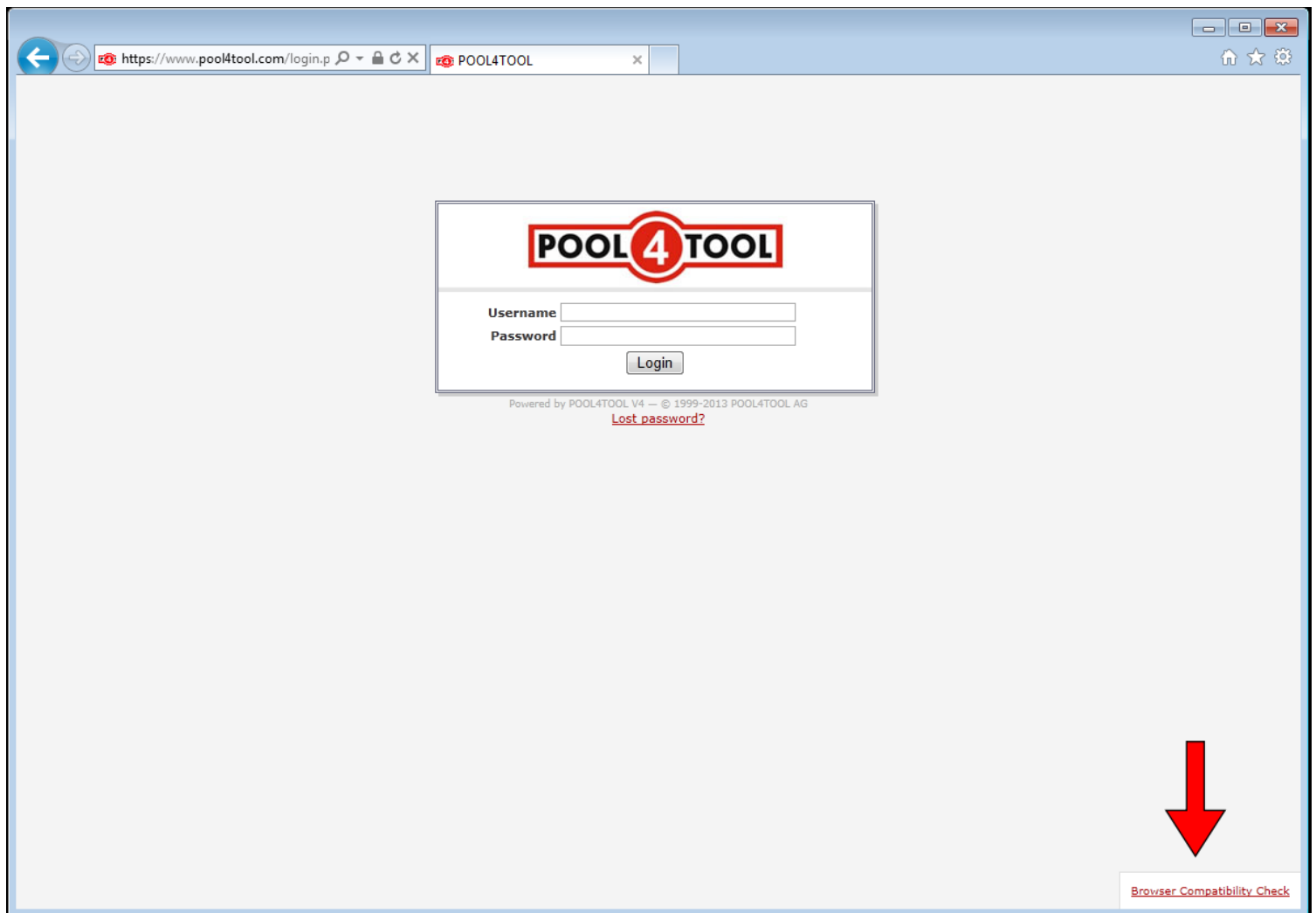
For Firefox and Chrome based browsers, standard settings should be fine.

This document assumes that you already have a browser installed. It is not intended to describe how to install IE 9 or how POOL4TOOL works.

2. Systemrequirements

- PC with at least 1GHz processing power and 256MB RAM
- Screenresolution of 1024x786 (recommended: 1280x1024)
- Internetconnection with at least 56KBit/sec (ISDN or better recommended)
- Firewall Rules: outgoing HTTP and HTTPS must be allowed
- Browser: IE7 or better, Chrome or Firefox
- Java: JRE 7

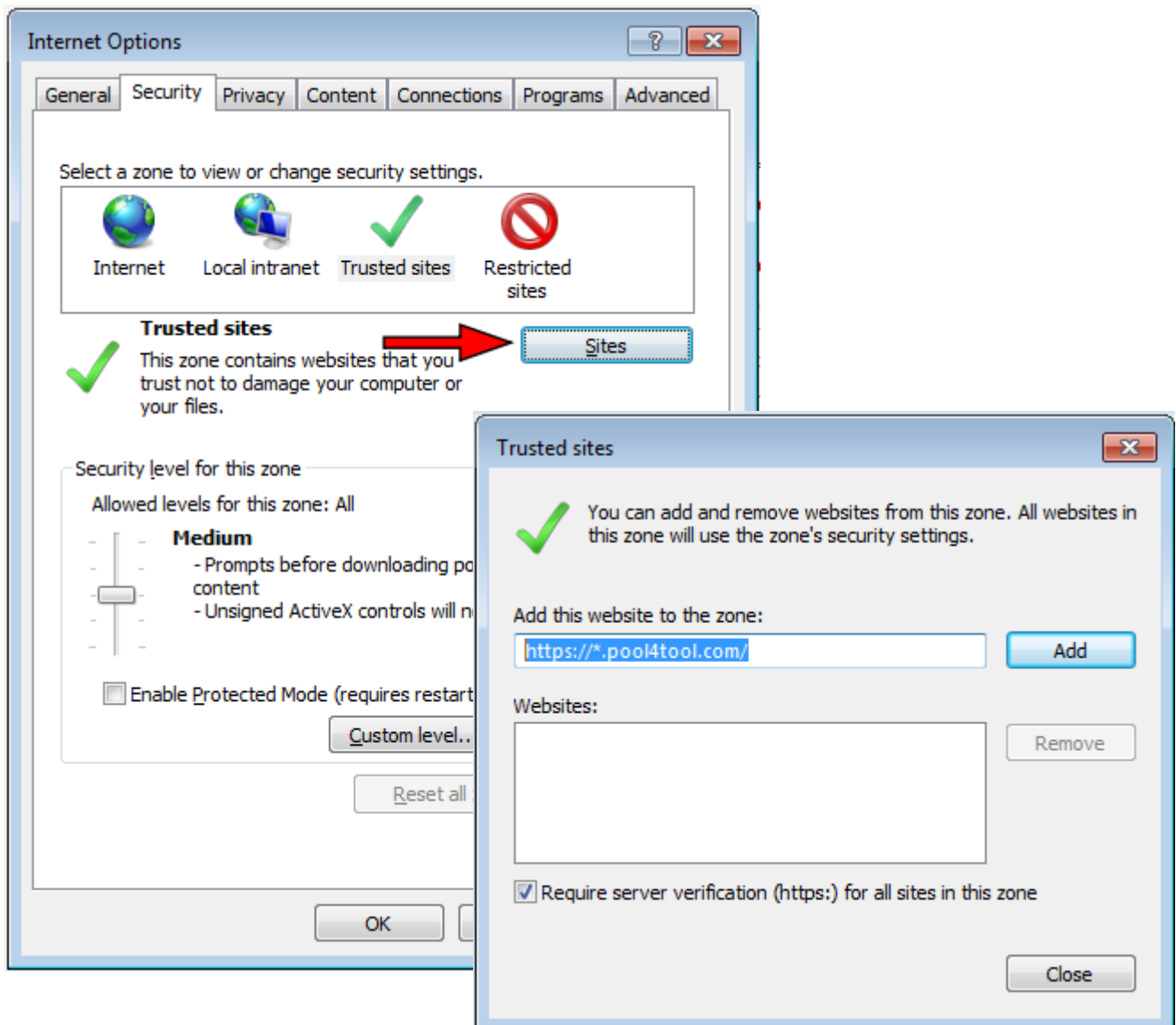
You can easily check if your browser is compatible by doing a "Browser Compatibility Check" in the lower right corner of the login page (see screenshot).



3. Browser settings for Internet Explorer 9.0

3.1 Trusted sites

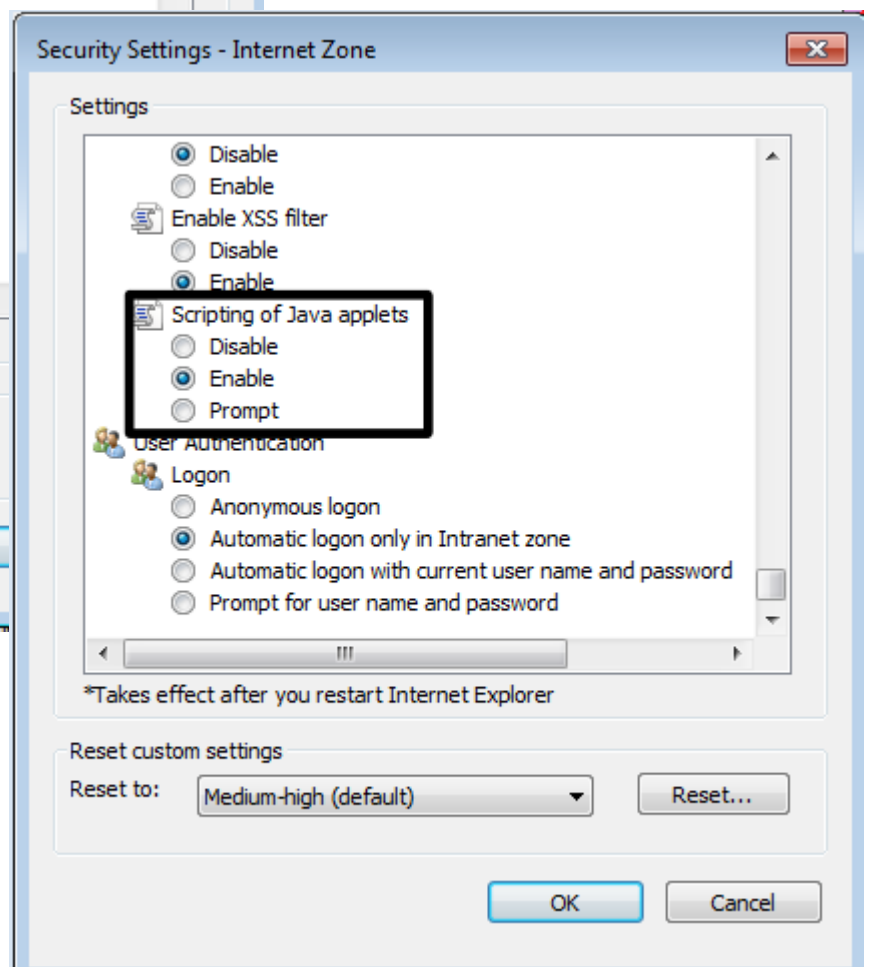
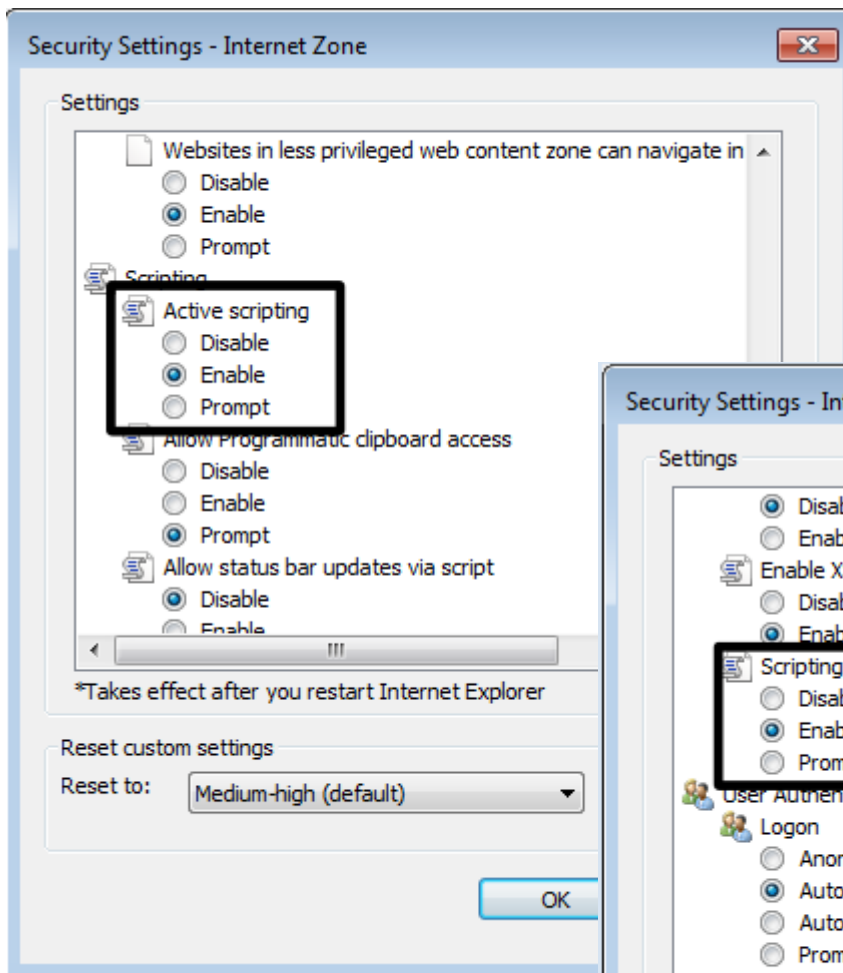
In some environments it is required to add POOL4TOOL to the trusted sites. To add POOL4TOOL to the trusted sites, click on the cogwheel in the upper right corner and choose "Internet options" and switch to the "Security" tab. There you choose "Trusted sites". Once you are there, click on "Sites" and add "https://*.pool4tool.com/" (without ticks) to your trusted websites.



3.2 Internet Settings

In the same tab as in Trusted Sites, click on the Internet Icon. On the bottom half you got a slider. If it is set to "Medium-high" or higher, you are good to go. Otherwise please make sure that at least the following settings under "Custom level..." are enabled:

- Active Scripting
- Scripting of Java applets



Advanced Settings

In the Internet Options window switch to the "Advanced" tab. There you need to scroll down until you reach the "Security" settings. Make sure that at least "Use SSL 3.0" and "Use TLS 1.0" are active.

